

KD-Validated Anti-Phospho-GATA3(S308) Rabbit Monoclonal Antibody
Rabbit monoclonal antibody
Catalog # AGI1537**Specification**

KD-Validated Anti-Phospho-GATA3(S308) Rabbit Monoclonal Antibody - Product Information

Application	WB, FC, ICC
Primary Accession	P23771
Reactivity	Rat, Human, Mouse
Clonality	Monoclonal
Isotype	Rabbit IgG
Calculated MW	Predicted, 48 kDa , observed, 48 kDa
Gene Name	KDa
Aliases	GATA3 GATA3; GATA Binding Protein 3; HDR; Trans-Acting T-Cell-Specific Transcription Factor GATA-3; GATA-Binding Factor 3; GATA-Binding Protein 3; HDRS
Immunogen	A synthesized peptide derived from human Phospho-GATA3(S308)

KD-Validated Anti-Phospho-GATA3(S308) Rabbit Monoclonal Antibody - Additional Information

Gene ID	2625
Other Names	
Trans-acting T-cell-specific transcription factor GATA-3, GATA-binding factor 3, GATA3	

KD-Validated Anti-Phospho-GATA3(S308) Rabbit Monoclonal Antibody - Protein Information**Name** GATA3**Function**

Transcriptional activator which binds to the enhancer of the T-cell receptor alpha and delta genes. Binds to the consensus sequence 5'-AGATAG-3'. Required for the T-helper 2 (Th2) differentiation process following immune and inflammatory responses. Positively regulates ASB2 expression (By similarity). Coordinates macrophage transcriptional activation and UCP2-dependent metabolic reprogramming in response to IL33. Upon tissue injury, acts downstream of IL33 signaling to drive differentiation of inflammation-resolving alternatively activated macrophages.

Cellular Location

Nucleus.

Tissue Location

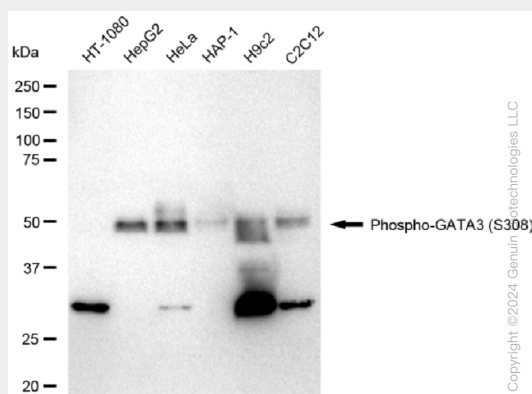
T-cells and endothelial cells.

KD-Validated Anti-Phospho-GATA3(S308) Rabbit Monoclonal Antibody - Protocols

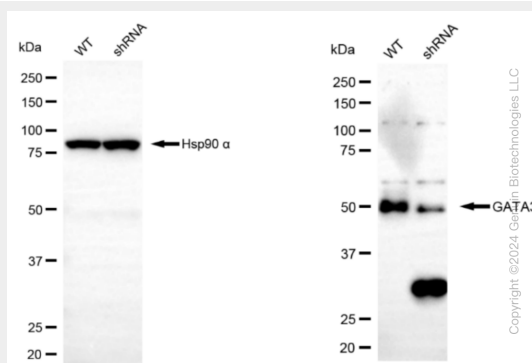
Provided below are standard protocols that you may find useful for product applications.

- [Western Blot](#)
- [Blocking Peptides](#)
- [Dot Blot](#)
- [Immunohistochemistry](#)
- [Immunofluorescence](#)
- [Immunoprecipitation](#)
- [Flow Cytometry](#)
- [Cell Culture](#)

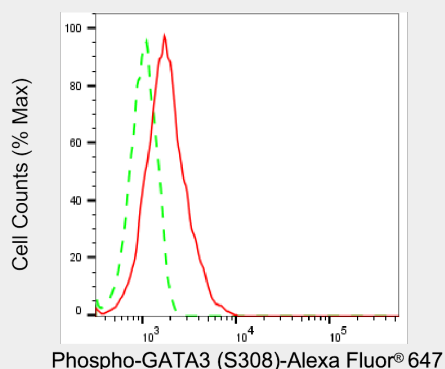
KD-Validated Anti-Phospho-GATA3(S308) Rabbit Monoclonal Antibody - Images



Western blotting analysis using anti-Phospho-GATA3(S308) antibody (Cat#AGI1537). Total cell lysates (30 µg) from various cell lines were loaded and separated by SDS-PAGE. The blot was incubated with anti-Phospho-GATA3(S308) antibody (Cat#AGI1537, 1:5,000) and HRP-conjugated goat anti-rabbit secondary antibody respectively.

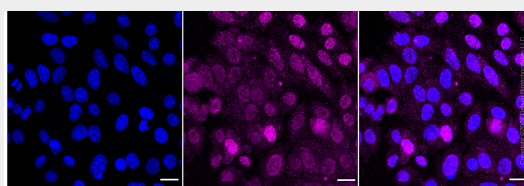


Western blotting analysis using anti-Phospho-GATA3(S308) antibody (Cat#AGI1537). Phospho-GATA3(S308) expression in wild type (WT) and Phospho-GATA3(S308) shRNA knockdown (KD) HeLa cells with 30 µg of total cell lysates. Hsp90 α serves as a loading control. The blot was incubated with anti-Phospho-GATA3(S308) antibody (Cat#AGI1537, 1:5,000) and HRP-conjugated goat anti-rabbit secondary antibody respectively.



Copyright ©2024 Genuin Biotechnologies LLC

Flow cytometric analysis of EPH receptor B1 expression in HT-1080 cells using anti-EPH receptor B1 antibody (Cat#, 1:2,000). Green, isotype control; red, EPH receptor B1.



Immunocytochemical staining of HepG2 cells with anti-phospho-GATA3 (S308) antibody (Cat#AGI1537, 1:1,000). Nuclei were stained blue with DAPI; Phospho-GATA3 (S308) was stained magenta with Alexa Fluor® 647. Images were taken using Leica stellaris 5. Protein abundance based on laser Intensity and smart gain: Medium: Scale bar: 20 μ m.